



—  
**HOWDY!**

DSA IT Liaisons Communications Committee  
11/03/2020

# ► Agenda

- Tech Tip: Siteimprove Intelligence Platform
- Annual Security Assessment Update
- Data Protection Efforts and Best Practices
- Mac Management Initiative
- DoIT Updates
- Q&A



Donald St. Martin

# ► Siteimprove Modules



## Accessibility

Provide an accessible brand experience for everyone



## Quality Assurance

Create error-free, trustworthy content



## SEO

Rise above the ranks once and for all

Siteimprove EN  
https://siteimprove.com/en/

No group selected

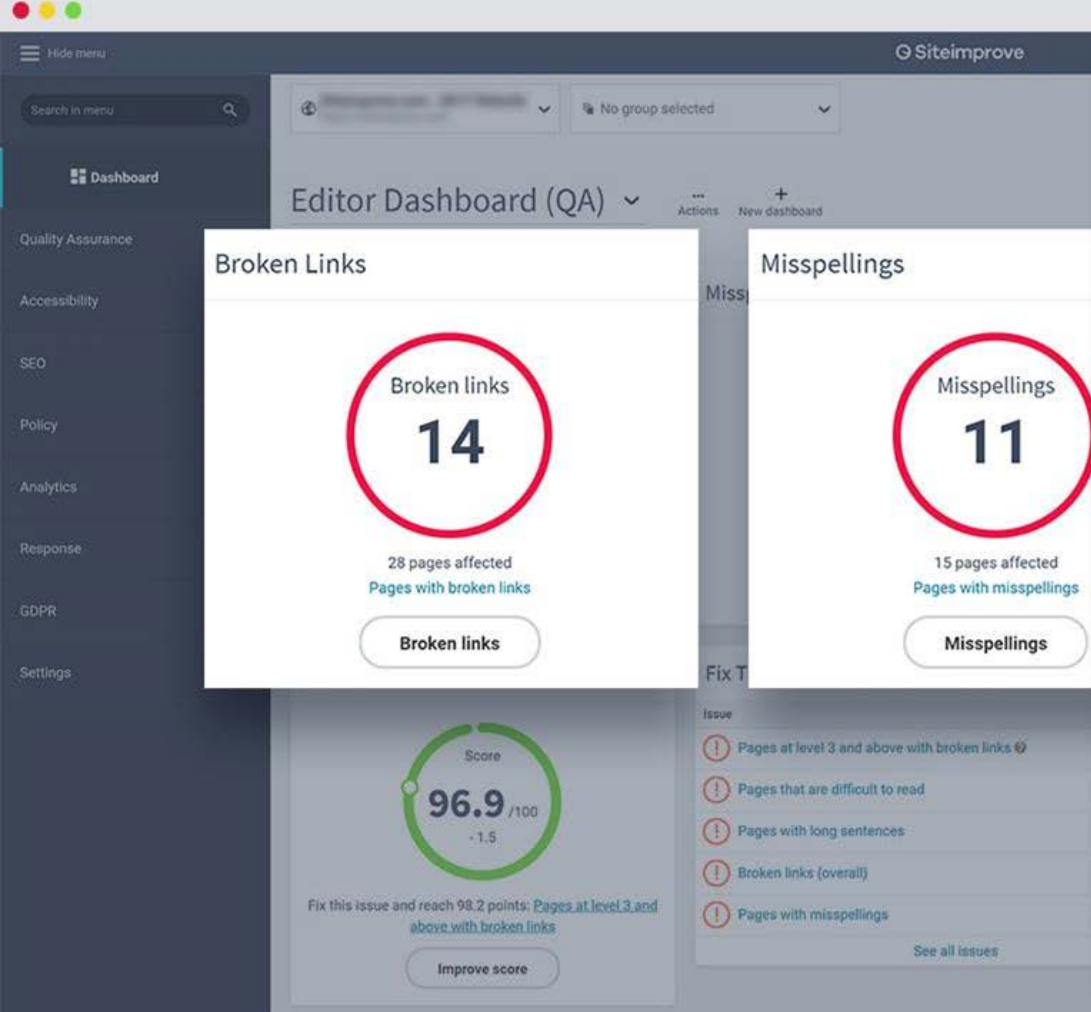
## Guidelines

### Web Content Accessibility Guidelines (WCAG)

Conformance level	No.	Guidelines and Success Criteria	Errors ①	Warnings ②
	1	Perceivable		
	1.1	Text Alternatives		
A	1.1.1	Non-text Content ⓘ	✓	✓
	1.2	Time-based Media		
A	1.2.1	Audio-only and Video-only (Prerecorded) ⓘ	✓	✓
A	1.2.2	Captions (Prerecorded) ⓘ	✓	✓
A	1.2.3	Audio Description or Media Alternative (Prerecorded) ⓘ	✓	✓
AA	1.2.4	Captions (Live) ⓘ	✓	✓
AA	1.2.5	Audio Description (Prerecorded) ⓘ	✓	✓
AAA	1.2.6	Sign Language (Prerecorded) ⓘ	✓	✓
AAA	1.2.7	Extended Audio Description (Prerecorded) ⓘ	✓	✓
AAA	1.2.8	Media Alternative (Prerecorded) ⓘ	✓	✓
AAA	1.2.9	Audio-only (Live) ⓘ	✓	✓
	1.3	Adaptable		
A	1.3.1	Info and Relationships ⓘ	1	2
A	1.3.2	Meaningful Sequence ⓘ	-	-
A	1.3.3	Sensory Characteristics ⓘ	-	-

# Automated accessibility checks

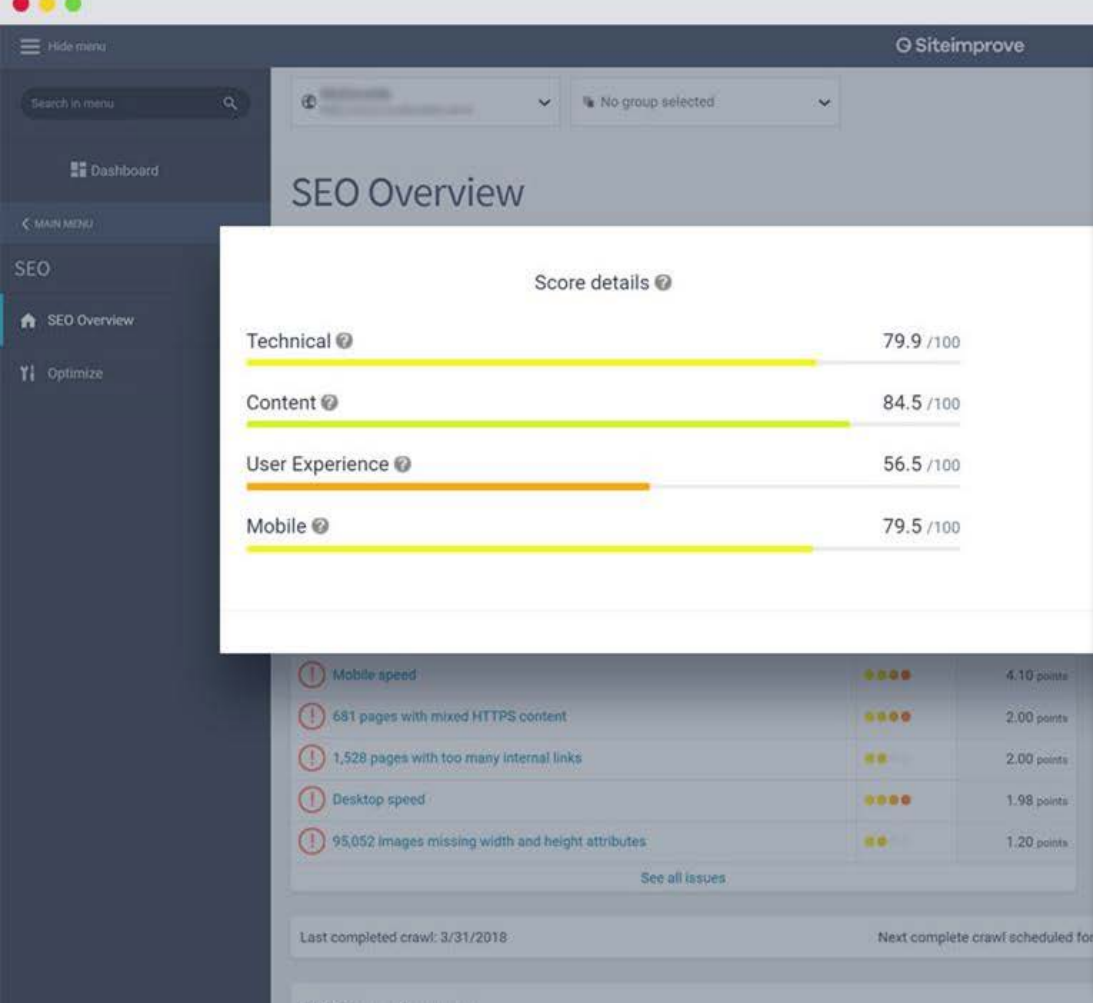
► Siteimprove provides automated testing that strictly adheres to WCAG standards, so you can spot issues and errors across all conformance levels. Automated testing allows you to simultaneously audit hundreds of thousands of pages across dozens of sites, so you can prioritize the parts of your website that need swift attention. Siteimprove also runs automated accessibility tests on your PDFs to ensure they are accessible and user-friendly.



# Link and spell check

► Find out exactly where dead-ends and mistakes live on your website and fix them before visitors notice.

- Be certain no broken link or misspelling falls through the cracks
- Prioritize what to fix first based on page views and click data
- Create a custom, brand-specific dictionary to speed up spell checks



# On-page diagnostics

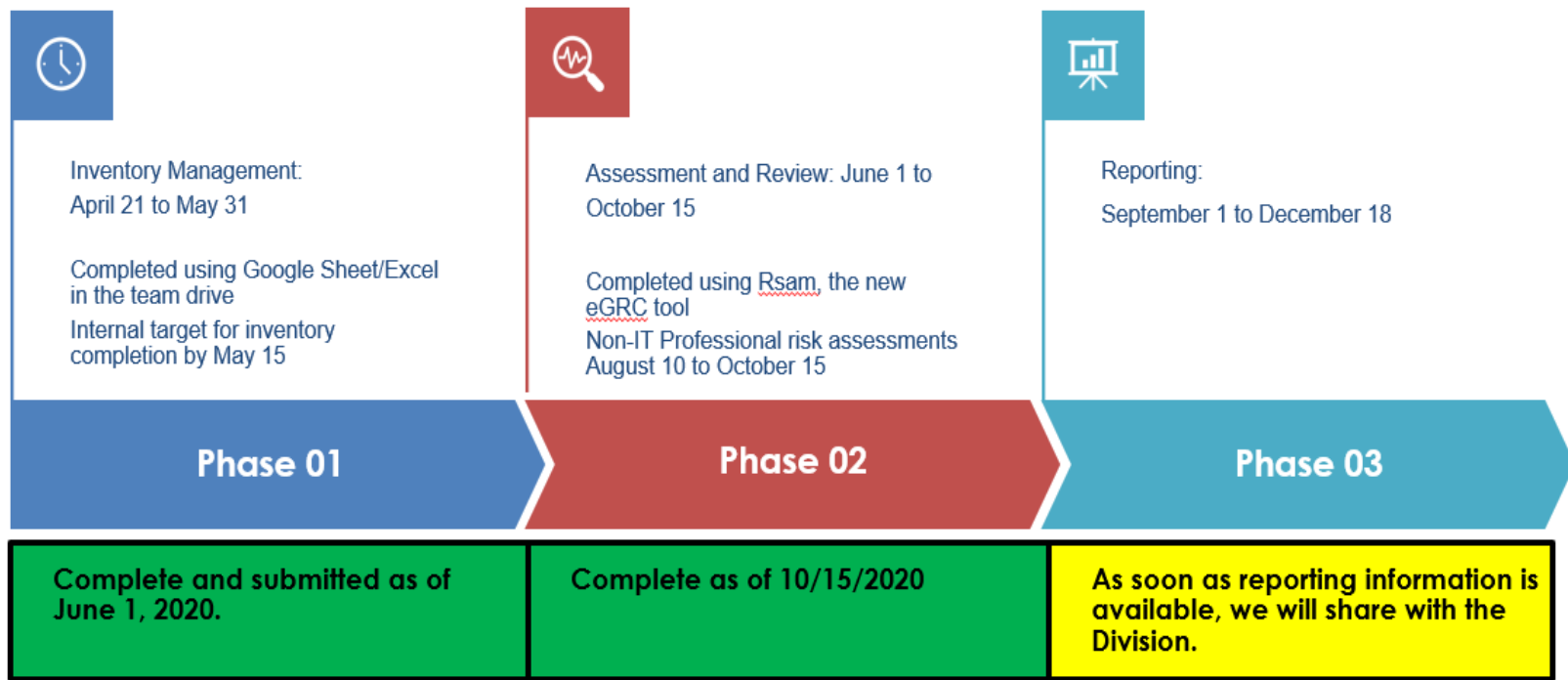
► Siteimprove SEO incorporates 66 unique SEO checks, including scans for missing meta descriptions, spelling mistakes, broken links, outdated files, poor readability, and links to unsafe domains. How you perform against these checks make up your SEO Score, measured on a scale of 0-100.

# **Annual IT Security Risk Assessment Update**

Justin Ellison  
Russell Gatlin



# IT Security Risk Assessment Update



# Data Protection Efforts and Best Practices

Justin Ellison  
Russell Gatlin

# ► Data Protection Efforts and Best Practices

[SC-13 \(Cryptographic Protection\)](#) lays out encryption requirements for protecting confidential and restricted information

- Confidential and restricted information must be protected with appropriate encryption at all times, both at rest and in transit.
- Confidential and restricted information must be encrypted if copied to, or stored on, a portable computing device, or removable media
- Controlled information that is transmitted over a public network (e.g., the Internet) must be encrypted

**The owner of an information resource, or designee, is responsible for implementing this control.**

# ► Data Protection Efforts (*cont'd*)

## DoIT Efforts

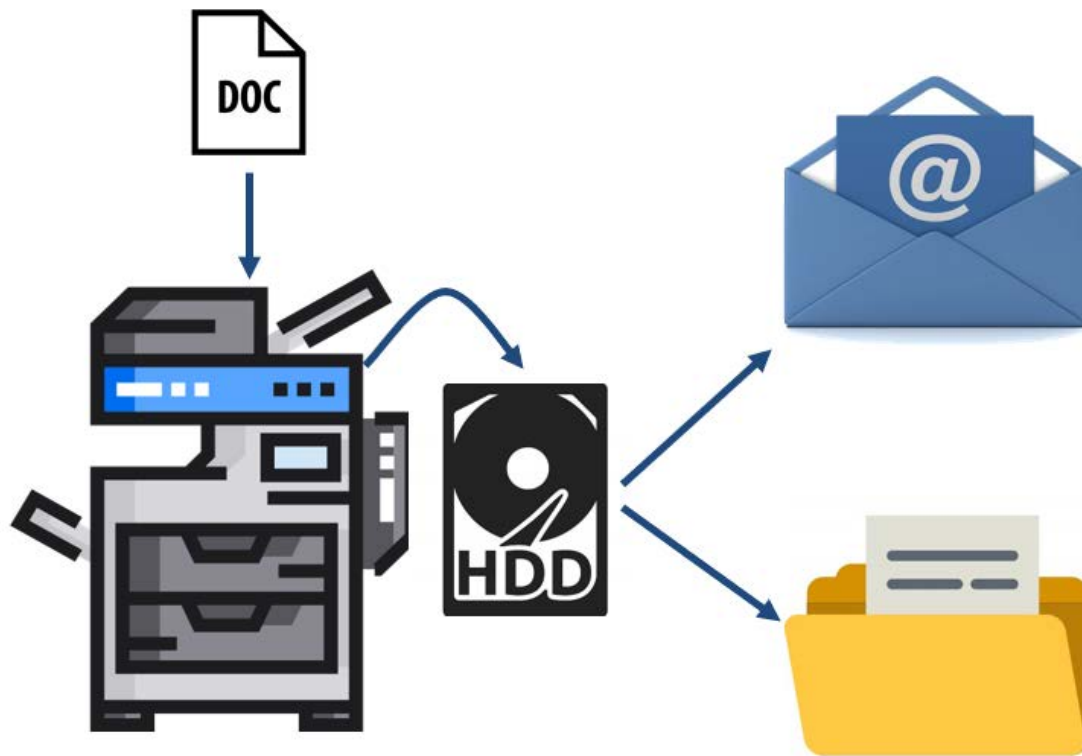
- Windows 10 Disk Encryption
- Database Transparent Data Encryption
- Virtual Server Encryption
- In Testing: Symantec File Share Encryption

## Best Practices

- FileX for transferring Confidential/Restricted Data
- Outlook option for sending encrypted email (discussed previously)
- Scanning docs to connected devices (networked multifunction devices)

# ► Data Protection Efforts - Copiers

- Copiers have **local storage**
- Scanned document **images are saved** locally
- Some copiers are configured to send to **Email** and/or **Network File Shares**
- Copier storage and transmission **not encrypted**



# Mac Management Initiative

Morgan Hammond

# Mac Management Initiative



## Enrollment

Five minute on-site enrollment of workstations and iPads within scope.



## Reporting and Discovery

Work with a pilot group to identify software needs, optimum operating system and configurations.



## Deployment and Reconfiguration

Deploy policies and configurations to all applicable workstations and devices.

Launch software center.

Transition to long term support.

## Phase 01

## Phase 02

Enrollment Dec. 7-18

Beginning January 2021

Estimated Completion:  
June 2021

# ► DoIT Updates

- BRM and IT Comm/Training Coordinator
  - Liaisons attend 2nd round BRM interviews (wk of 11/16)
- Systems Administrator II
- Tentative Teams Training scheduled for 11/12
- Draft Demand Reviews with Liaisons coming...



# Department Q&A

Darvis Griffin